

Demonstrative pronouns

THIS, THAT, THESE OR THOSE?

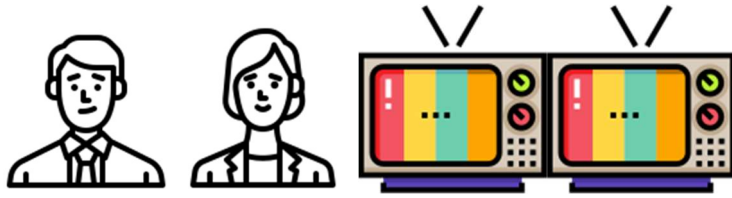
Choose the correct sentence:



1. These is a cat
2. This is a cat
3. That is a cat



1. These are dogs
2. That are dogs
3. Those are dogs



1. These are TVs (Televisions)
2. Those are TVs
3. This is TVs



1. Those is a plant
2. That is a plant
3. This is a plant



1. These are spoons and that is a table
2. This are spoons and these is a table
3. Those are spoons and that is a table